



LEADER PF3 PLUS

ECOTRONIC

SETTING A NEW STANDARD FOR MIXER WAGONS

ECOTRONIC

AUTOMATIC SMART ASSIST

AUTOMATIC ACTIVATION AND
SELF-MANAGEMENT OF AUGER'S SPEED

AUTOMATIC ADJUSTMENT
OF DIESEL ENGINE RPM

AUTOMATIC ADJUSTMENT
OF THE LOADING BELT SPEED

AUTOMATIC ACTIVATION OF THE
SHREDDER AND MANAGEMENT
OF THE CUTTING LENGTH

AUTOMATIC ADJUSTMENT OF THE
COUNTER-KNIFE POSITION

AUTOMATIC SPEED OF
THE MILLING CUTTER

AUTOMATIC UNLOADING DOOR AND
BELT ADJUSTMENT





LEADER PF3 PLUS

ECOTRONIC

Leader PF3 Plus ECOTRONIC is something completely new. An exceptional machine that guarantees absolute reliability thanks to a concentrate of smart technology for an unrivalled working experience with an innovative hi-tech electronic system.

A machine designed for large farms with more than 1000 livestock, available in 30 and 36-cubic-metre triple auger versions. A project featuring not only a large load capacity, but above all the unique integrated digital machine management system called ECOTRONIC.

Thanks to this new feature, the Leader PF3 Plus becomes a true laboratory on wheels, combining extreme working precision, exceptional manoeuvrability, and excellent driving comfort. The integrated electronic management enables optimised machine output, ensuring high performance and minimum consumption, thus reducing operating costs and the environmental impact.

The innovative ECOTRONIC system allows automatic and optimal control of the loading equipment based on the recipe, according to the raw materials that are progressively selected, guaranteeing the best possible quality of the unifeed.

The recipe can be programmed not only through the weighing system display, but also remotely using the farm's management program.

The synergy with Polispac NIR, integrated into the machine, is crucial insofar as it accurately and continuously monitors the mix, informing the operator of the best time to unload based on the level of homogeneity achieved.

During the unloading phase, Polispac NIR continues to monitor the quality and characteristics of the mix, sending real-time data to the farm management program which is then used by the farmer to carry out further evaluations and in-depth checks.



CAPACITY 30-36 m³

3 AUGERS

TOP UNIFEED



HIGH-PERFORMANCE MILLING CUTTER

the loading equipment consists of a powerful 2200 mm wide milling cutter that guarantees fast and precise processing of the material. Its particular shape ensures a rapid flow towards the loading channel, respecting the structure of the silage without altering its characteristics and nutritional properties.

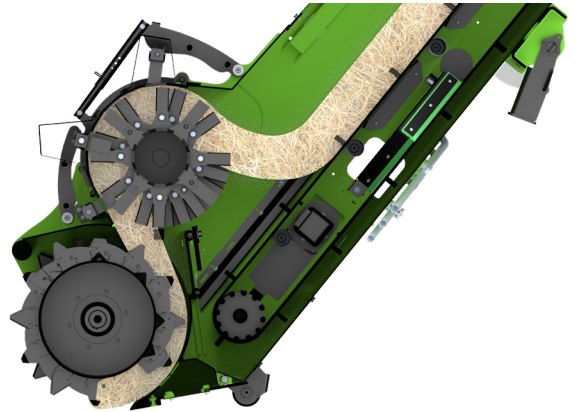
The large 800 mm wide loading channel is equipped with a rubber belt allowing the product to be quickly transported into the mixing tank. The transfer speed is adjustable according to the component being loaded.



IMPROVED SHREDDER PRECISION

The ECOTRONIC system also offers a new solution for the slasher. Thanks to the electronic actuators the operator can automatically control the position of the counter-knives based on cutting needs.

- REDUCED CUTTING TIME (-80%) COMPARED TO A SYSTEM WITHOUT SHREDDER
- 128 REVERSIBLE KNIVES AND 3 SETS OF COUNTER-KNIVES
- 800 MM WIDTH
- 90KW POWER WITH TWO-WAY ROTATION



NEW CAPACITIES WITH THE SAME MIXING EFFICIENCY

The innovative mixing tank has been designed to uniformly and rapidly mix large quantities of product thanks to the three vertical augers up to 36 m³.

The special shape of the mixing parts produces perfect unifeed that respects the fibre, an essential feature of the Faresin PF series. The three counter-knives allows a fast and precise cut, and the possibility for their automated and timed activation further optimises their performance.

To facilitate unloading operations in all types of farms, the tank can have up to four ports equipped with unloading belts that can be simultaneously controlled directly by the operator.

POWER BLADE

The new system allows the blade to be manually returned to its original position, ensuring a consistently homogeneous mix and complete discharge.

UNLOADING BLADE

Adjustable blade in Durostat (HB400) that promotes complete and homogeneous discharge while maintaining the highest level of cleanliness in the tank.



KNIVES

The auger is equipped with a series of knives (from 8 to 13) that can be mounted in two different positions depending on the compositional characteristics of the product to be mixed. Option to add extra knives with the tungsten variant.





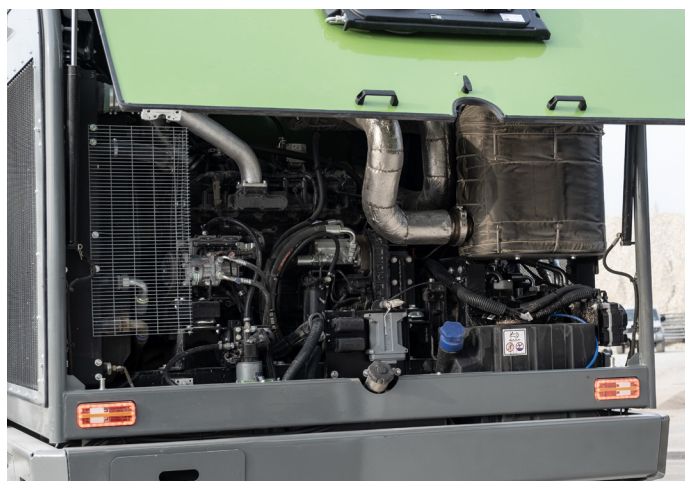
MANOEUVRABILITY IN EVERY SITUATION

The Leader PF3 offers high manoeuvrability even on roads and in confined spaces. It has 3 steering axles, two of which are permanent all-wheel drive powered by a pump that delivers 285 l/min@2200 rpm and with 43% limited slip, ensuring exceptional manoeuvrability in all conditions.

INNOVATIVE TRANSMISSION

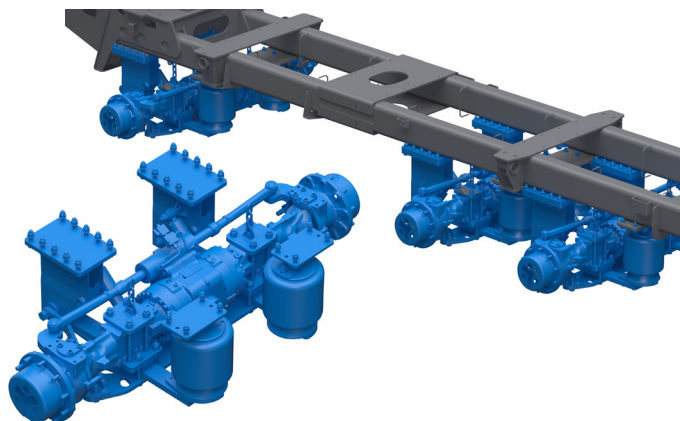
The Leader PF3 has an all-new transmission that guarantees a high level of driving safety and unprecedented comfort at speeds of up to 40 km/h, even in the most demanding conditions thanks to the sturdy frame and pneumatic suspension system with self-adjustable height depending on the load.

ENGINE AT HIGH PERFORMANCE



ALL-WHEEL STEERING

Steering is hydraulically assisted on all axles in permanent all-wheel mode to reduce the machine's manoeuvring space with a radius of only 2690 mm.



The machine is equipped with a 212 kW 6.7 l FPT Stage V engine, providing all the necessary power with limited consumption.

The engine is fitted with a cooling fan that automatically adjusts based on the temperature, complete with airflow reversal to clean the heat exchanger. Thanks to carefully studied performance optimisation, the engine delivers the right amount of power as needed, thus enabling a significant reduction in fuel consumption and a sharp decrease in noise emissions.

The decision to place the mixer wagon engine in the rear part of the frame has proven to be a winning choice for Faresin:

- greater operator comfort in terms of noise and visibility
- better weight distribution
- easier maintenance thanks to the access platform
- improved heat dissipation
- a cleaner engine
- reversible fan for automatic radiator cleaning



CAB

On board the PF cab, all controls are ergonomically arranged to allow the operator to easily manage the sophisticated technology system installed. All information regarding the machine is grouped together on the display in different screens for simpler and more practical operation. The introduction of the ECOTRONIC system has allowed the addition of new vehicle information so that all work operations can be monitored at all times.



All the main functions are conveniently controlled from the electro-proportional joystick, while the secondary ones are controlled from the side keypads.



The "rotary keypad" allows proportional control of loading and unloading, counter-knife positioning, and the loading and unloading belt



Interactive 7-inch colour display with integrated diagnostics. Quick-view of machine parameters, direct setting of certain functions and NIR parameters.



Weighing system to set the recipes and monitor the quantity of loaded product. Camera kit with monitor for a complete view.

NIR PRECISION FEED MEASUREMENT

Every day, the zootechnical world faces the challenge of preparing a homogeneous ration respecting the nutritional characteristics for the animals. A result that can only be achieved by controlling a process exposed to many variables.

From this awareness comes Precision Feed Measurement (PFM), a Faresin exclusive based on the precision feeding technique and the integration between the mixer wagon and the PoliSPECNIR device, both portable and applicable on the machine.

The poliSPEC installation, directly on the tub, transforms the wagon into a real laboratory on wheels allowing the operator to:

- monitoring the entire process in real time
- intervene on the process based on precise indicators
- analyze all raw materials and ration

The homogeneity of the obtained ration, aims to ensure the wellbeing of the animal for a greater milk production.

FARMATICS CONNECTIVITY

Managing company machinery, exchanging information, optimising maintenance and preventively monitoring problems, will be the standards of the near future. Faresin recommends protecting the machine's value by strictly following the scheduled maintenance suggestions provided by the Manufacturer.

- geolocalisation and fleet management
- remote support
- creation of detailed and customised graphics for all registered signs
- performance and fuel consumption monitoring
- maintenance programming and cost management



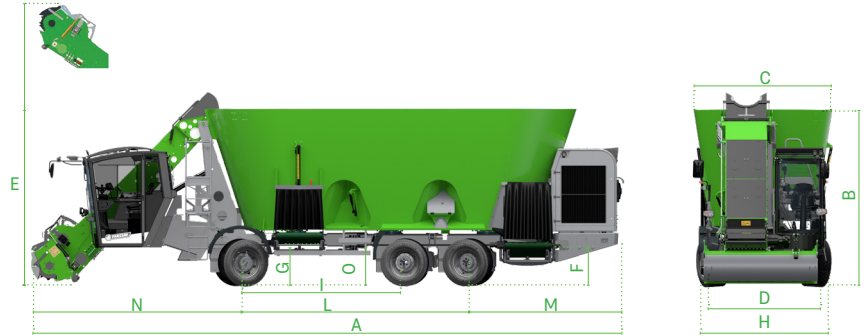
FARM MANAGER WEB

With the Feed Management system, the collected weighing data can be displayed in an online web portal or with the use of offline PC software. You can manage recipes and stock products. Monitor and share your farm data in real time.

- Interconnection of the mixer wagon with the food management application on the cloud.
- Access from any platform and from anywhere via the internet
- 18 languages available
- Wireless kit with SIM cards for internet access
- Improved ingredient utilisation and management
- View and share real data to make decisions faster
- Share real data with your food expert
- Simultaneous access and editing for up to 3 users

LEADER PF3 PLUS

ECOTRONIC



LEADER PF 3 PLUS		3.30	3.36
CAPACITY	m ³	30	36
UNLADEN WEIGHT	kg	22500	23000
[A] TOTAL LENGTH	mm	12000	11800
[B] HEIGHT	mm	3350	3550
[C] WIDTH	mm	2500	2800
[D] MILLING CUTTER WIDTH	mm	2200	2200
[E] MILLING HEIGHT	mm	5600	5600
[F] FRONT UNLOADING HEIGHT	mm	950	950
[G] REAR UNLOADING HEIGHT	mm	1150	1150
[H] AXLE CLEARANCE	mm	2500	2500
[I] AXLE CLEARANCE 1-2	mm	3350	3350
[L] AXLE CLEARANCE 2-3	mm	1265	1265
[M] REAR PROJECTION	mm	3050	3050
[N] FRONT PROJECTION	mm	4130	4130
[O] FRAME HEIGHT	mm	610	610
STANDARD TYRES		385/55 R22,5	385/55 R22,5

CONFIGURATION	ECOTRONIC
Transmission	hydrostatic
Engine	FPT N67 Stage V
Power (kW/hp)	212/290
Post treatment system	DOC + SCROF
Adjustable seat with air suspension	standard
Joystick	multi-function electro-proportional
Cabin	PF Cab
Ventilation system	three speeds and temperature setting
Air conditioning	optional
Steering column with three adjustment points	standard
Front and rear road traffic lights	standard
6 work LED lights	standard
Fuel tank (l)	280
Electronic weighing system	4 sensor
Maximum speed (km/h)	40
Front axle 1	Adjustable air suspension drive and steering
Front axle 2	Adjustable and steerable air suspension
Rear axle	Adjustable air suspension drive and steering
All-wheel steering	standard
Height-adjustable air suspension and automatic leveling	standard
ABS system	automatic
ASR system	selected
Number of augers	3
Speed range of the auger (rpm)	5, 10, 15, 20, 25, 30, 40, 50
NIR ready	optional
Number of knives	10 + 10 + 10
External diameter of milling cutter roller (mm)	650/700
Two unloading doors with belt	standard
Hydraulic counter-knives	3
Shredder on milling cutter	optional
Automatic greasing system	optional



SETTING A NEW STANDARD FOR MIXER WAGONS



FARESIN INDUSTRIES SPA HQ

Via dell'Artigianato, 36
36042 Breganze (Vicenza), Italy
Tel. + 39 0445 800300
faresin@faresin.com

FARESIN DEUTSCHLAND GMBH

Steinach B.R. - an der
Frankenhoehe 1
91605 Gallmersgarten, Germany
Tel. +49 9843 9802828
lager@faresin.de

FARESIN DEUTSCHLAND NORD GMBH

Wissmannstr, 59
27755 Delmenhorst, Germany
Tel. +49 4221 800 989-0
info@faresin-nord.de

FARESIN POLAND SP. Z O.O.

ul. Borowiacka 9
87-100 Toruń, Polska
Tel. +48 503 147 811
poland@faresin.com

FARESIN INDUSTRIES FRANCE

2 Rue de l'Avenir
14460 Colombelles, France
Tel + 33 2 31 82 79 61
france@faresin.com

11.2022

